



HAND CRAFTED BY AUSTRALIA'S MOST AWARDED LUXURY MOTOR YACHT BUILDER



IN A LEAGUE OF ITS OWN



50 SPORTS MOTOR YACHT

Edition 23.2

# IN A LEAGUE OF ITS OWN

Riviera Sports Motor Yachts are uniquely specified craft that share a single vision of unlimited adventure in absolute luxury. Both the 72 and 68 Sports Motor Yacht models answered the demand for a luxury, long-range motor yacht that excels in all water sports. In the design of the 64, 58, 50 and 46 models, Riviera captured this unique DNA and scaled it to deliver that same sports performance, blue water capability and luxury lifestyle appointments.

Finally, engineering excellence matches their sports performance with a very smooth and efficient ride. While the wide, uncluttered cockpit enables all manner of water sports action.

Owners have embraced this new and innovative design and we now have Riviera Sports Motor Yacht owners enjoying the Mediterranean, South-East Asia, the Caribbean, the South Pacific and the Whitsundays.

## RIVIERA SPORTS MOTOR YACHT COLLECTION

46 • 50 • 58 • 64 • 68 • 72



“On behalf of the 900-strong Riviera team, I am proud to introduce our superb 50 Sports Motor Yacht, created to Riviera’s world-class standards on Australia’s Gold Coast.”

A handwritten signature in black ink, appearing to read 'Rodney Longhurst'. The signature is fluid and cursive.

Rodney Longhurst  
Owner - Riviera







## A LUXURY YACHT WITH BLUE WATER SPORTS PERFORMANCE

A smooth and quiet ride at speed with renowned Riviera luxury appointments ensure this blue water yacht has it all. 4D Designs, in collaboration with the Riviera design team, have created this unique new series of sports motor yachts inspired by a wish list from our global family of experienced Riviera owners. Now you and your loved ones can celebrate true, long-range luxury cruising the Riviera way. Or simply escape from the everyday for a relaxing weekend away.

Onboard your Riviera Sports Motor Yacht you will fall under an exotic spell in the absolute lap of luxury, relaxing in complete tranquillity or revelling in adventure, exploration, diving, snorkelling, kayaking, fishing, creating and sharing truly memorable moments with family and friends – for as long as your schedule allows or heart desires.



# START YOUR NEXT ADVENTURE

Riviera Sports Motor Yachts are uniquely specified craft that share a single vision of unlimited adventure in absolute luxury. The generous cockpit opens up a whole world of sporting opportunities from fishing and diving, to paddle boarding or kayaking. The alfresco deck forms the entertaining centre offering privacy and shelter from the elements.

Step easily from the dock and enter via the outward-opening transom doors. At anchor, both doors open a full 180 degrees and lock flat against the transom, extending the cockpit out to the boarding platform. The cockpit has ample storage as well as a fridge/freezer, separate icemaker and a barbecue station with wet bar and sink, all protected by lids that stay up on gas struts. LED lighting and an internal gloss-finish make cleaning easy.

Imagine you're entertaining in the cockpit now: it's sunset and you've found the perfect anchorage in a secluded bay. Another magic moment savoured aboard your 50 Sports Motor Yacht.

## SAFETY FOR ALL

Riviera's Sports Motor Yachts feature wide side decks with raised coamings illuminated in soft blue LED light, the sure-footed grip of non-skid surfaces and the reassuring support of 316 marine grade stainless steel handrails all designed to make movements aboard confident.

The foredeck on the 50 Sports Motor Yacht is a versatile space at anchor or underway – to launch or retrieve the tender, for sightseeing or relaxation. The foredeck boasts plentiful storage lockers and is where most owners choose to securely store their tender. Unloading is effortless courtesy of a low-profile boom davit.

At anchor, the foredeck transforms from a practical tender cradle to a sumptuous sunlounge with adjustable backrest. The perfect spot to stretch out and relax.









## THE MAGIC OF THE ALFRESCO DECK

A beautiful space, offering protection from the elements, the alfresco deck is the entertaining centre of your yacht. To appreciate this clever design, slide open the tinted glass door, then open out the large tinted glass awning window, both framed in superior stainless steel. Now the alfresco connects and flows through to the saloon and galley.

There are two supremely comfortable lounges either side, the L-shaped lounge to port wraps around a superbly-crafted folding teak table and there's a large insulated locker located beneath the seat. The space under the starboard lounge is also put to good use with an infill cushion that easily converts the lounge into a superb daybed. Perfect for lazy afternoons.

You'll love relaxing and entertaining in the alfresco deck — one of the many outstanding design features that affirm Rivas' Sports Motor Yachts are in a league of their own.





## DESIGNER GALLEY

The galley of your Riviera Sports Motor Yacht could easily pass for a fine, designer kitchen and you can expect ample company from your guests along with the best kind of kitchen ergonomics.

Premium stainless steel appliances are beautifully integrated into the handcrafted Riviera joinery of varnished exotic timbers and solid surface benchtops. Additional storage lockers are built-in overhead, along with a pull-out pantry drawer. Opposite the galley is a large freezer to help you provision for extended time aboard.

Everything you need to create gourmet meals in no time: two refrigerator drawers; a combination oven and microwave with grill; and an electric cooktop with pop-up pot keepers and rangehood. And when it's clean-up time the option of a dishwasher is always appreciated. Riviera has set the standard in galley design, always creating an inspired space to enjoy.







## INSPIRE THE CONVERSATION

The further afield your travels take you, the more you will delight in all the refinements and comfort of your saloon — your favourite retreat, a place to unwind. Here our designers have captured a wonderful ambiance that's always peaceful, with the finest of fabrics and leatherette panelling and the comfort of reverse-cycle air conditioning.

Beneath the staircase leading to the flybridge is a fine example of Riviera's renowned craftsmanship — your skillfully-varnished timber bar and liquor cabinetry with built-in lockers to keep glassware and bottles secure.

Ahead of the galley to port is the L-shaped leather lounge dining area with a polished timber table — cleverly designed to fold at both ends and manually slide sideways. Directly opposite is an additional U-shaped lounge to stretch out and relax.

The saloon lounge can also transform into a media room with an LED TV located forward of the lounge, and a superb sound system hidden in the cabinetry powering four surround sound speakers in the saloon and two more in the alfresco deck.



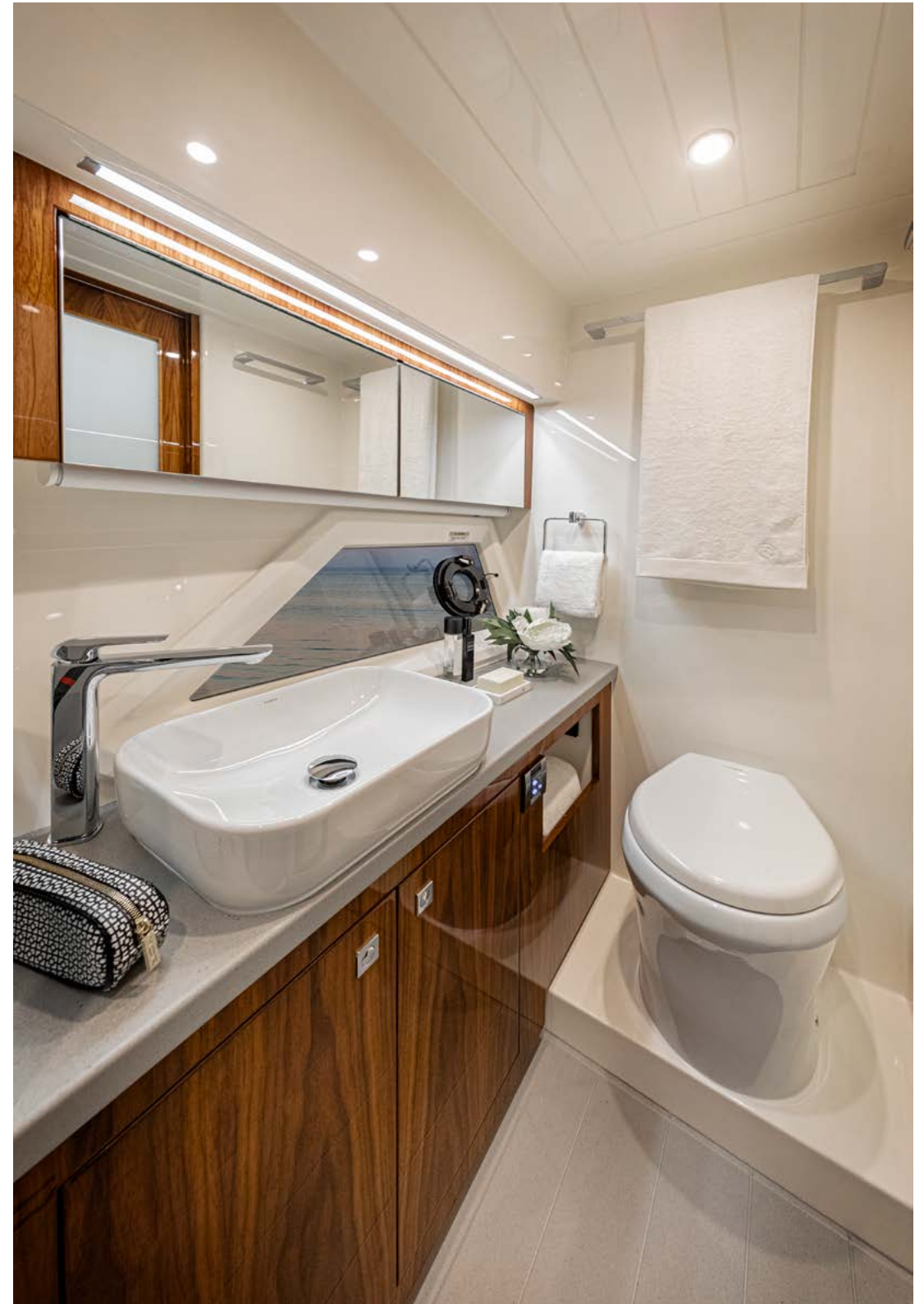
# A WELCOMING GLOW OF LUXURY

In the accommodation deck, you'll find a level of appointments normally associated with only the finest hotels. So, enter the timber-finished companionway and immediately notice the headroom, space and welcoming light... a discreet, guiding glow of soft LED lighting throughout. You'll feel pampered straightaway. And you still have the three staterooms and two bathrooms to experience and enjoy. When the finest materials meet superior flair, true luxury is created. That's exactly what you and your guests will experience on the accommodation deck of your Riviera Sports Motor Yacht.

## FULL-BEAM MASTER STATEROOM

Large and luxurious, the master stateroom will delight. The walk-around, queen island bed is pure heaven and features a plush headboard in concert with lush deep pile carpet. Boutique bedside tables of course, grain-matched with leather inlays. And there is still ample room for a highly-polished, timber drawer bureau port side, and a chaise lounge to starboard. To complete your opulent retreat, a designer ensuite bathroom and walk-in wardrobe are located forward on the port side.

A beautifully handcrafted vanity cabinet, solid surface benchtop, designer full-sized shower and more — the effect is both appealing and contemporary. Naturally, both the master and bathroom feature reverse-cycle air conditioning. Large hull windows fill the suite with natural light and a special feeling of being at one with your surrounds. Your floating beach house comes with a cedar-lined walk-in wardrobe, full-length hanging space and cedar shelves. Relax and unwind, your LED TV with surround sound system is standing by waiting to entertain.











## GIVE YOUR GUESTS THE VIP TREATMENT

Onboard your magnificent Riviera 50 Sports Motor Yacht, guests receive VIP treatment with the breathtaking forward stateroom. You could be forgiven for mistaking it for the master, such is the level of comfort, finish and appointments.

As in the master, the island bed is queen-sized and walk-around. Notice the LED lighting situated here too, and the superb, handcrafted cabinetry. That's in addition to large his and hers, cedar-lined hanging lockers as well as more storage under the island bed. Here you'll find an optional Dyson cordless vacuum, stowed in its own charging station, always at the ready.

There's plush pile carpet underfoot, stylish hull windows perfectly framing the natural beauty outside, as well as the option of an LED TV and sound system. Enjoy the comfort of reverse-cycle air conditioning or open the hatches above and catch a beautiful sea breeze.

Needless to say, this detail in luxury and pampering also extends to the adjacent designer bathroom.



## VERY ACCOMMODATING

The starboard cabin will delight guests with the sparkle of natural light from the tinted hull window and fresh sea air at anchor, courtesy of an opening porthole. There are two Pullman-style beds with large storage space below, bedside table, storage cupboard with drawers, reverse-cycle air conditioning, plush carpet, LED lighting and a cedar-lined hanging locker.

Guests share the dual access bathroom of the forward stateroom via the day head, and are always pleasantly surprised by the space and flair – a frameless, full-sized shower, designer vanity, solid surface benchtop and large mirrors.

### PACK A LITTLE LIGHTER

Optional for your 50 Sports Motor Yacht is the laundry station discreetly and centrally located in the companionway of the accommodation deck. A stacked washer and dryer provide an efficient solution to all the fresh laundry needs of everyone onboard. So, you can pack a little lighter and enjoy your adventures for as long as you like.





# A SENSATIONAL FLYBRIDGE

You will be immediately impressed by the superb all-round visibility through tempered, tinted glass curved around three sides with Strataglass clears sealing the rear.

The main helm is forward to port and an optional aft helm can be located starboard. Fingertip joystick control with electric steering and state-of-the-art electronic and engine systems means docking your Riviera Sports Motor Yacht into a marina berth will be as relaxed as your day on the water.

Opposite the helm to starboard is another lounge where guests can stretch out, relax and chat to the skipper whilst underway. A supremely comfortable U-shaped lounge is located portside. The hand-varnished, solid timber folding table drops down and an infill cushion converts the lounge into a big, beautiful daybed. This daybed also comes in handy as a very accommodating double bed for overnight guests.

At anchor, the flybridge becomes another entertaining deck, with commanding views matched to your favourite music through a powerful, 4-speaker sound system. Opposite the aft lounge, a wet bar equipped with drawer fridge, sink and solid surface bench top ensures a constant supply of snacks and drinks to keep the party flowing.



# THE PURE JOY OF BEING IN COMMAND

Cast off and explore a world full of new ports, secluded bays, friends, entertaining and recreational possibilities. The helm is located port side with fully-adjustable captain and companion chairs, and a console brimming with technology that makes boating with Riviera easy. The functionality of all the operating systems, helm controls and touchscreens has been ergonomically-designed and engineered for total ease and efficiency. Add the option of single-glance control with cameras to the saloon, bow anchor, cockpit and engine room feeding directly to your navigation screens. Visibility is outstanding through the curved and toughened glass windscreen.

The Riviera 50 Sports Motor Yacht is powered by twin turbo diesel Volvo Penta IPS engines that provide effortless acceleration, are quick to the plane, quiet and deceptively fast.

This unique luxury motor yacht has blue water capability you have to experience to fully appreciate. Press a button and twin sunroofs slide back to invite a cooling sea breeze or the stars above. The art of the escape has never been more fulfilling.  
Or simpler to command.







## POWER AND TECHNOLOGY

Pod drives are a proven propulsion technology and Riviera has now launched over 1,400 pod-driven luxury motor yachts. Pods are used on such worldly vessels as the Queen Mary II cruise ship as well as a multitude of commercial craft. This proven technology has revolutionised pleasure boating. Pod drives offer an excellent power-to-weight ratio delivering improved performance, enhanced torque, improved fuel efficiency, simple maneuverability, reduced environmental impact and quiet operation thanks to underwater exhausts. In simplified terms, Volvo Penta's innovative Inboard Propulsion System (IPS) features twin pod drive units, each of which is capable of turning independently to provide the correct thrust to move the yacht in the exact direction required by the skipper easily controlling the system with either a steering wheel and throttles or a joystick.

The 50 Sports Motor Yacht has two joysticks, one at the helm and another mounted to port in her cockpit. She also offers a Dynamic Positioning System (DPS) for station-holding while preparing lines and fenders or while waiting off a fuel jetty, the convenience of autopilot, manual trimming with optional auto-trim, as well as a highly-efficient Anti-Corrosion Protection (ACP) unit mounted to the transom to reduce the maintenance of sacrificial anodes.

For even greater ease of boating with Riviera, the latest smart technology is now available on the 50 Sports Motor Yacht. The Volvo Penta Assisted Docking system is the next generation of marine automation. It simplifies yacht docking and improves your control for manoeuvring in tight spaces to make docking easy in challenging conditions. With the joystick, you control the boat's path and speed, while the system compensates for elements such as wind and current. Push the joystick forward and the system lays out a straight path that the boat follows. At any time, you can release the joystick and your boat will hold on a fixed position.

Volvo Penta Easy Connect gives you an overview of your yachts and engine data, route information and more, by linking your engine, via Bluetooth, to your smartphone or tablet. Easy Connect consists of two parts — the Easy Connect Interface and the Easy Connect app. The app has functions to share your trips and map, your position or share diagnostic trouble codes with your dealer via email.

The forward-facing, counter-rotating propellers are protected by the premium antifoul coating propped to achieve a long service-life, as well as stainless steel line cutters from Volvo Penta, located between the propellers for protection from fishing lines, plastic bags or nets. The line cutters create a very efficient rotating cutting action to protect the propellers and shaft sealing without increasing drag or fuel burn.

The 50 Sports Motor Yacht employs the revolutionary Volvo Penta D11-IPS 950 propulsion system with twin D11 diesel engines and IPS pod-drives (2x 533kW/725hp). This is a perfectly-matched drive package for the 50 and the system's Class 5 commercial rating assures reliability and durability. Additionally, the IPS package is fully-certified under the Det Norske Veritas and Germanischer Lloyd (DNV GL) classification system.

## ENGINEERING EXCELLENCE

The clean and uncluttered engine room — with acoustic and thermal insulation and LED lighting — highlights the skilled consideration for which Riviera engineering is respected globally. The impressive air intake system helps keep the engine room temperature below the manufacturer's recommendation, reducing fuel consumption even further.

All onboard drains feed into sumps while an advanced mist-elimination system with vanes draws moisture from the air and feeds directly overboard. Three automatic bilge pumps and one manual bilge pump are located at various points throughout the hull and also pump directly overboard.

## WINDOW TO THE FUTURE

Volvo Penta's state-of-the-art Glass Cockpit navigation and monitoring system blends new technology with dependability and practical functionality and can be fully optioned to the 50 Sports Motor Yacht. The Glass Cockpit system provides a very clean, easy-to-use system with enhanced overview and control of both engines and navigation including GPS, sounder and radar, even autopilot and optional charts — and all in one place and in the one system. Integrated with the IPS Electronic Vessel Control (EVC) system, the Glass Cockpit gathers all driver information and displays it in one location. The easy-to-handle, touchscreen displays give you instant data and control. The ergonomic design and interface for the dashboard offers push buttons on the controls and touch-buttons on the screens.

Just one clever feature of the Glass Cockpit is the unique auto guidance feature that — based on the yacht's draft and your desired safety distance to obstacles — searches through all relevant charts to create a route you can follow while avoid shallow water, buoys and other obstacles. Coupled with the autopilot it not only shows the way, it can take you there.

Added peace of mind is having as standard the Volvo Penta Connect System to allow servicing dealers to connect to your vessel when in cell phone range.

## CZONE SIMPLICITY

The fully-integrated CZone digital switching system enhances the ease of monitoring and operation of the Riviera 50 Sports Motor Yacht's onboard systems, including tanks, and extends centralised touchscreen control to lighting, pumps, batteries, entertainment systems and appliances. CZone allows owners to operate multiple circuits at a single touch, energising all lighting and electrics depending on your requirements. It comes pre-programmed with three modes — 'Entertaining', 'Cruising' and 'Dock-unattended' — and these modes can be customised.

Other user-friendly features include interior light-dimming, timer controls, automated circuit control, wiper speed and wash functions. There's also a 'Service' mode that shuts down all power and systems.

Based on industry-proven Controller Area Network (CAN) technology, the CZone system offers DC and AC switching and over-current protection. Full systems monitoring (with alarms) including AC voltage, current frequency and kilowatts, DC voltage, current and remaining battery capacity, along with fluid tank levels and indication for systems in operation, is clearly displayed on the touchscreen at the saloon entrance. There's also the option of additional iPad connectivity so you can control CZone from anywhere onboard your yacht.

## INNOVATIVE OPTIONS

Electric roller blind window furnishings, single-glance helm control with cameras to aft, cockpit, bow anchor and engine room with direct feed to helm navigation screens, Volvo DPS - Dynamic Positioning and Siren Marine remote monitoring and control.

## IMPECCABLE PEDIGREE

Every Riviera combines superior-strength with a watertight collision bulkhead forward, and independent compartments throughout the hull. Our legendary build-quality also features vinylester resin in the outer layer of lamination to increase the ability to withstand water absorption. An isophthalic gelcoat exterior provides an impeccable and hard-wearing surface finish.

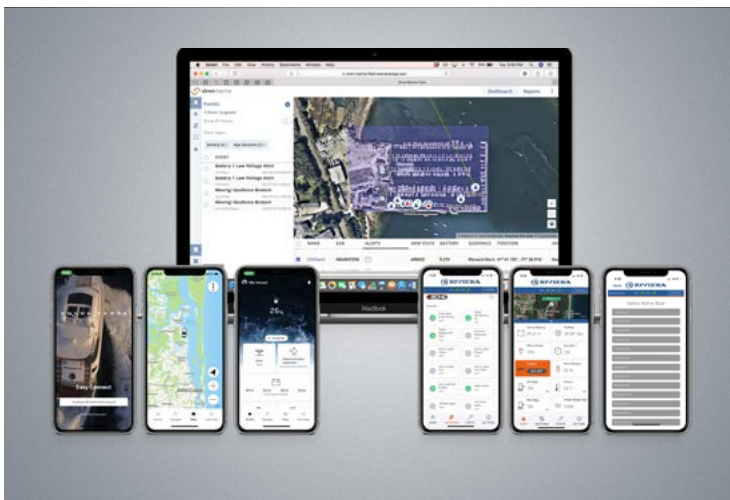
From the waterline down, the hull is solid GRP with reinforced bottom, keel and chines. Structural core material is used in the hull flanks, main deck and hardtop, while precisely-fitted, lightweight resin transfer-moulded small parts have a double-sided gelcoat finish and are pre-fitted for a perfect seal when all the major components are bonded together.

Riviera uses only 316 marine-grade stainless steel in all our exterior fastenings. All stainless steel rails feature ground and polished welds to ensure a consistently smooth and mirror finish.

We have also created convenient access to every key maintenance point throughout the yacht so any issues can be quickly identified and addressed.

## INDUSTRY-LEADING WARRANTIES

We support all of our yachts with industry-leading warranties — 2-year express and 7-year structural limited warranties. In addition, with all our Volvo Penta powered yachts we offer a 5-year Volvo Penta systems and electronics limited warranty. Life is too short for needless compromise. So when it comes time to invest in your dream motor yacht, why settle for a lesser option when you can enjoy all that makes up a Riviera.



# 50 SPORTS MOTOR YACHT SPECIFICATIONS

|   |           |            |
|---|-----------|------------|
| Length Overall<br><small>(inc. swim platform and bow sprit)</small> | 17.01 m   | 55' 10"    |
| Hull Length (Lh to ISO8666) *                                       | 15.43 m   | 50' 7"     |
| Beam <small>(inc. gunwale)</small>                                  | 4.96 m    | 16' 3"     |
| Maximum Draft <small>(inc. props)</small>                           | 1.45 m    | 4' 9"      |
| Dry Weight **<br><small>(approx. depends on options)</small>        | 25,500 kg | 56,218 lbs |
| Fuel Capacity ***   | 3,300 L   | 872 US gal |
| Water Capacity ***  | 620 L     | 164 US gal |
| Holding Tank Capacity ***   | 151 L     | 40 US gal  |

|                   |                             |                        |
|-------------------|-----------------------------|------------------------|
| Sleeping Capacity | 6 persons                   |                        |
| Cockpit Area      | 6.50 m <sup>2</sup>         | 69.97 ft <sup>2</sup>  |
| Mezzanine Deck    | 5.90 m <sup>2</sup>         | 63.51 ft <sup>2</sup>  |
| Total             | 12.40 m <sup>2</sup>        | 133.47 ft <sup>2</sup> |
| Bridge Clearance  | 6.85 m                      | 22' 6"                 |
| Standard Engine   | Volvo Penta D11 IPS 950 x 2 |                        |
|                   | 533 kW                      | 725 hp each            |

\*Specifications may vary on a regional basis.

## CLARIFICATION AND OUR CARE FOR YOUR INFORMATION

\* Length of the hull (Lh) to ISO8666: includes all structural and integral parts (i.e. the moulded length of the hull). It excludes parts that can be removed in a non-destructive manner without affecting the structural integrity of the craft (e.g. pulpits, outdrives, driving platforms, rubbing strakes).

\*\* Dry weight represents the estimated minimum weight of a yacht with standard engines and options, no fuel or water on board, no equipment or provisions and no personnel. The stated dry weight may be exceeded.

\*\*\* Denotes net tank capacity. For useable capacity do not rely on more than 90% of tank capacity. Actual capacity will vary according to yacht trim and sea state. Speeds are subject to normal weather conditions, fuel and/or water levels, passengers and equipment loads.

Due to the constant refinement of specifications and design by Riviera Australia, the information in this document may change without notice. Specifications may vary with time and by region. Some images or illustrations in this brochure may include options or custom details. Please note that as safety equipment specifications or standards vary by country, this aspect of your purchase will need to be completed by you and/or your Riviera representative. Please refer to your Riviera representative for specific warranty cover and the latest detailed list of inclusions and options prior to purchase.



**HARDTOP**  
Shown with optional tender and davit



**FLYBRIDGE DECK**  
Shown with optional foredeck sunpad



**SALOON DECK**



**ACCOMMODATION DECK**  
Shown with optional gyro





# RIVIERA TODAY

Welcome to the largest luxury yacht building facility in the Southern Hemisphere, our purpose-built, state-of-the-art 16.8 hectare site at Coomera, Gold Coast, Australia. Our proud heritage is a significant point of difference with the experience gained over 42 years launching over 5,900 luxury motor yachts. Handcrafting yachts internationally praised for their peerless quality, materials, structural strength, ease of operation and fine luxury finish.

Safety at sea is paramount and today's Riviera yachts are renowned for their blue water capability. So too is the passion for excellence shared by our award-winning Riviera team, maintaining a tradition of enduring quality that means your Riviera retains its value.

Today, Riviera builds the most advanced motor yachts ever, exporting around 55% of our annual production to a global dealer network spanning every continent. We design and build luxury motor yachts from 39 to 78 feet in length across six distinct model collections. Owners can choose from the proven blue water Flybridge range, stylish and sophisticated Sport Yachts, the sporty and adventurous SUV series, long-range Sports Motor Yacht designs, the luxurious new Motor Yacht or the classic Belize Motor Yachts. New models designed to inspire. It's all part of a deep-seated culture of customer care which goes beyond after-sales support and maintenance. When you acquire a Riviera, you join a family of fellow owners worldwide sharing adventures and advancing their boating knowledge and experiences in harmony with us.



RivieraAustralia.com