




OCEAN 460





DOMINATE THE OCEAN. INSPIRE AWE. SURPASS ALL
EXPECTATIONS WITH SUPREMACY AND STATURE.
DISTINGUISH YOURSELF. YOU ARE THE PINNACLE,
BECOME THE UNMISSABLE.

LENGTH OVERALL
42.0M / 137' 10"

BEAM
9.50M / 31' 0"

DRAFT
2.70 M / 8' 10"

DISPLACEMENT @ HALF LOAD
220,000 KG / 485,017 LB

FUEL CAPACITY (STANDARD)
24,600 LITRES / 6,499 US GAL.

TOTAL LONG RANGE CAPACITY
(WITH OPTIONAL TANK)
30,000 LITRES / 7,926 US GAL.

FRESH WATER CAPACITY
6,500 LITRES / 1,717 US GAL.

BLACK WATER CAPACITY
2,000 LITRES / 528 US GAL.

GREY WATER CAPACITY
2,500 LITRES / 660 US GAL.

ACCOMMODATION
UP TO 12 GUESTS & UP TO 9 CREW

ENGINE OPTIONS
2 x MAN 12V 1400 PS

MAXIMUM SPEED
UP TO 21 KNOTS

RANGE @ 10-12 KNOTS
UP TO 3,200 NAUTICAL MILES

DRIVES
SHAFTS

GROSS TONNAGE
460GT



























Sunseeker

Always Hold
Your Own



Sunseeker





60 YEARS OF INNOVATION
FASHION DESIGN
ABSOLINE
ABSOLINE
Pierre cardin
THE ALLURE OF BEAUTY













TERRY O'NEILL
LIVING WITH THE DESIGN



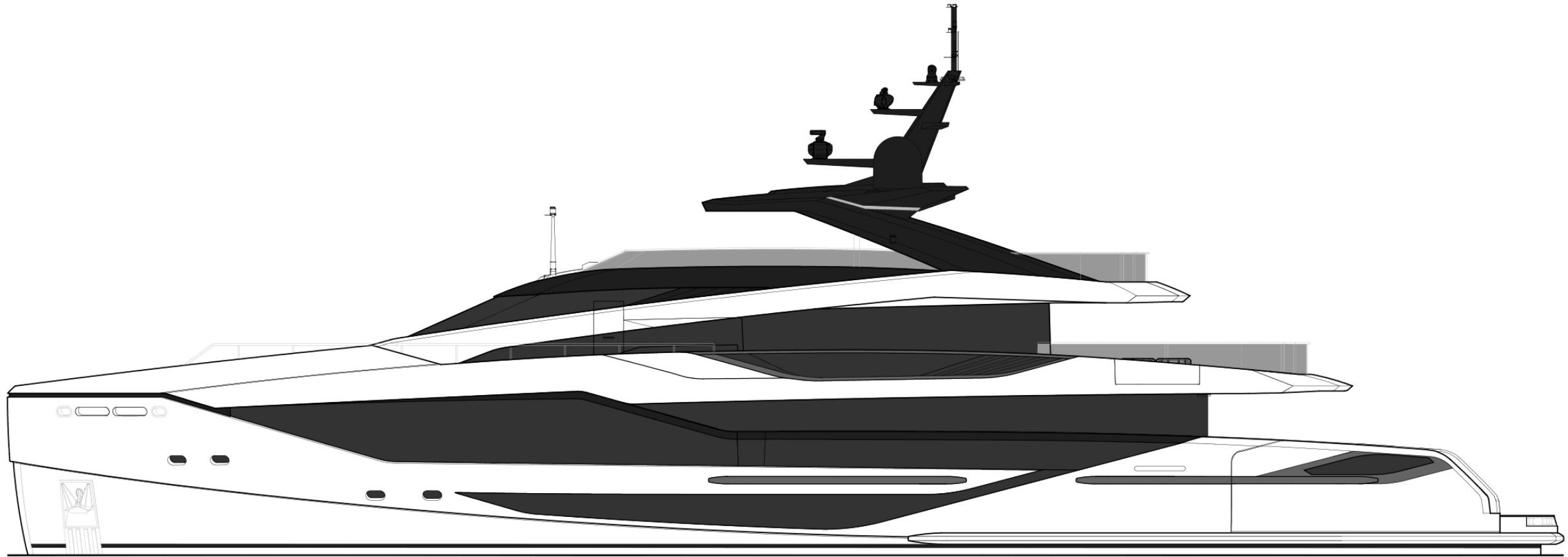
The vanity unit consists of a white marble countertop with two white rectangular sinks and chrome faucets. Below the countertop is a light-colored wood vanity cabinet with a central open shelf. The open shelf is illuminated from below and holds two stacks of folded white towels. On the countertop, there are several bottles of toiletries, including a green bottle, a dark brown bottle, and a white bottle with a pump dispenser. A large mirror is mounted above the vanity, reflecting the room and a towel rack with four white towels. The wall behind the vanity is covered in vertical wood paneling. The floor is dark marble with a white veining pattern.

The shower area is enclosed by a glass door with a chrome handle. The walls of the shower are covered in dark marble with a white veining pattern. A large, square, rain showerhead is mounted on the wall. A chrome shower tray is visible at the bottom of the shower. On a shelf inside the shower, there are several bottles of toiletries. The ceiling of the shower has recessed lighting.

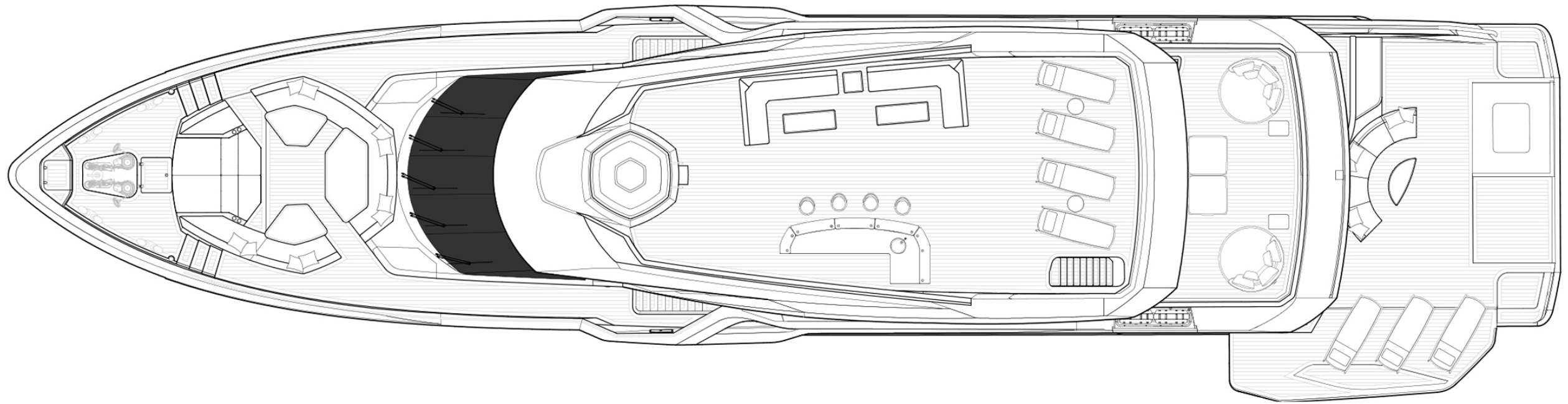
A white marble countertop is visible on the left side of the image, extending from the vanity area. It is set against a wall of vertical wood paneling.

A white toilet is visible in the bottom left corner of the image.

OCEAN 460
GENERAL ARRANGEMENTS

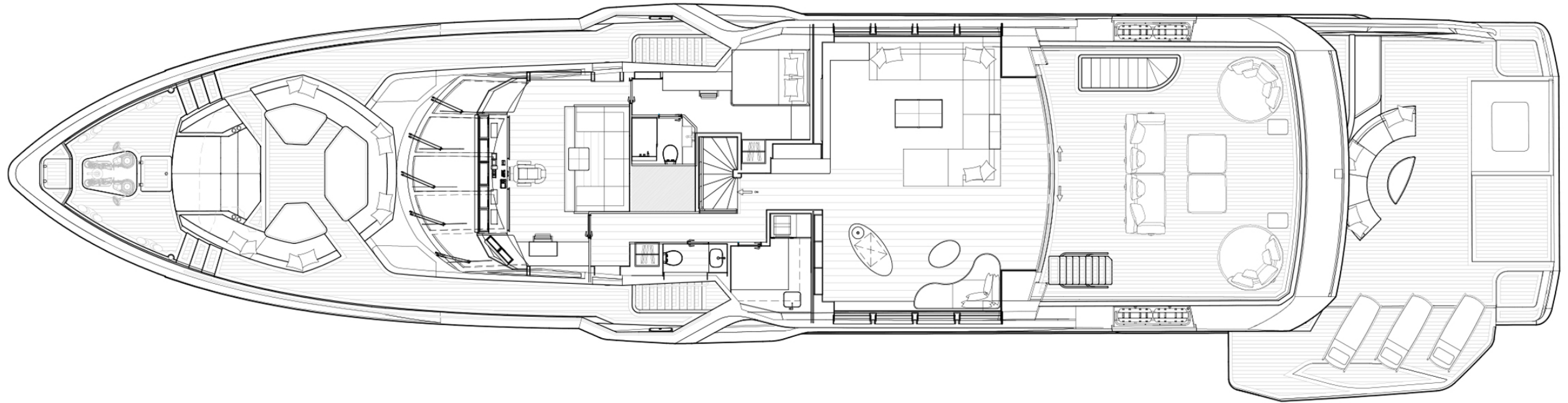


OCEAN 460
GENERAL ARRANGEMENTS



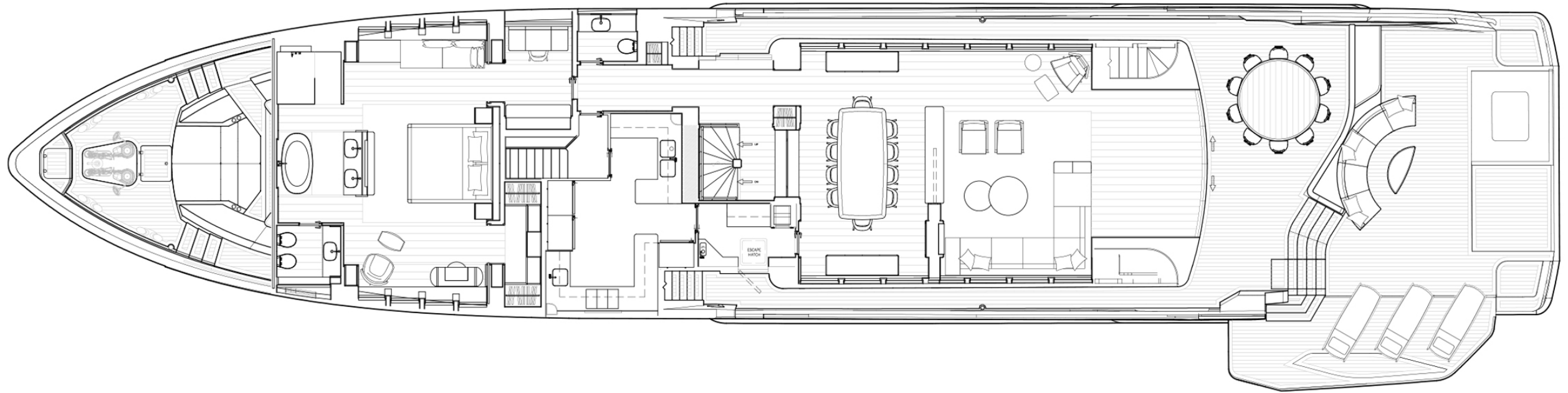
SKY DECK

OCEAN 460
GENERAL ARRANGEMENTS



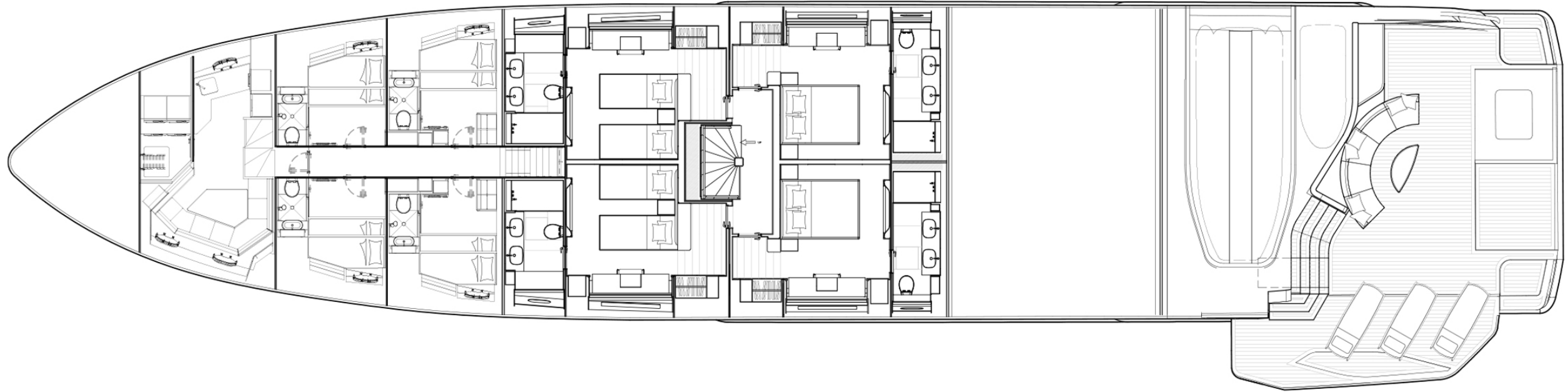
FLYBRIDGE

OCEAN 460
GENERAL ARRANGEMENTS



MAIN DECK

OCEAN 460
GENERAL ARRANGEMENTS



LOWER DECK



Whilst every effort has been made to provide accurate information, the content of this e-brochure is not intended to be, and should not be relied upon as providing, any warranty, representation, guarantee, or offer. Performance and range figures are estimates to be used as an indicative guide only and are not guaranteed. Dirt or marine growth on the hull, size of boat, engine choice and tuning, propeller condition and pitch, air and water temperature, fuel weight and quality, water weight, stores, number of people on board and other factors can each affect a boat's performance and range. The photographs and artist's impressions in this e-brochure are from existing models in the Sunseeker range. There may be items shown in these photographs and impressions that are not included in the standard inventory of the models shown. Specifications, measurements and certain other details contained in this e-brochure may relate to models only for sale in a particular territory. We cannot guarantee that the entire Sunseeker range will be available in every territory. Specifications for models sold in different territories may also vary. Specifications may be changed or models withdrawn at any time without prior notice. The individual specification for each vessel will be agreed as part of the order process and confirmed in the sales contract between the purchaser and the approved Sunseeker distributor or dealer in the relevant territory. Please contact the local Sunseeker distributor or dealer in the territory which is of interest to you, to enquire as to the models and options that are likely to be available in that territory. This e-brochure is created and published in the United Kingdom by or on behalf of Sunseeker International Ltd and subject to the limitations and exclusions set out herein provides information relating to new Sunseeker™ manufactured motor yachts sold outside of the United States of America and Canada. For parties requiring information on new Sunseeker models for sale in the United States or Canada please contact a Sunseeker USA Sales Co. Inc. appointed dealer in the relevant territory. All distributors and dealers of new Sunseeker manufactured motor yachts are independently owned and controlled businesses. They are not subsidiaries of, or agents for, Sunseeker International Limited, Sunseeker USA Sales Co. Inc. or any of their respective parent, subsidiary or affiliated companies. As such, no distributor or dealer has any authority to bind or obligate any Sunseeker company in any way unless first agreed in writing signed by an authorized Sunseeker signatory.

Information about how we use personal data is set out in our Privacy Policy at <https://www.sunseeker.com/legal>